



Milesight\_Release\_Note\_For\_NVR\_XX.7.0.6

Firmware Version: XX.7.0.6

Application Model:

MS-N8XXX/7XXX/5XXX/1XXX/1XXX-UT

Release Date: 2<sup>nd</sup> February, 2016

## 1.Overview

Milesight, a leading designer and manufacturer of IP communication products and IP video surveillance products, is pleased to announce the release of the new firmware version XX.7.0.6 of the Milesight NVR. This updated release includes the improvements and bug fixes.

## 2.Firmware link

| Model              | Firmware            | Download Address  |
|--------------------|---------------------|---|
| MS-N8016/8032/7016 | <b>1. X. X. XX</b>  | <a href="https://drive.google.com/file/d/0B19eK6xppbL0VjVPUVItUWg4UGc/view?usp=sharing">https://drive.google.com/file/d/0B19eK6xppbL0VjVPUVItUWg4UGc/view?usp=sharing</a>   |
| MS-N5004/5008      | <b>2. X. X. XX</b>  | <a href="https://drive.google.com/file/d/0B19eK6xppbL0Sk1rdTBvak1jSmc/view?usp=sharing">https://drive.google.com/file/d/0B19eK6xppbL0Sk1rdTBvak1jSmc/view?usp=sharing</a>   |
| MS-N5009/5016      | <b>30. X. X. XX</b> | <a href="https://drive.google.com/file/d/0B19eK6xppbL0VlAtQ2tGVG40VzA/view?usp=sharing">https://drive.google.com/file/d/0B19eK6xppbL0VlAtQ2tGVG40VzA/view?usp=sharing</a>   |
| MS-N1004/1008      | <b>31. X. X. XX</b> | <a href="https://drive.google.com/file/d/0B19eK6xppbL0OHFIanR2TWfPpRFk/view?usp=sharing">https://drive.google.com/file/d/0B19eK6xppbL0OHFIanR2TWfPpRFk/view?usp=sharing</a> |
| MS-N1009-UT        | <b>61. X. X. XX</b> | <a href="https://drive.google.com/file/d/0B19eK6xppbL0bGduWnZTeUdmd0U/view?usp=sharing">https://drive.google.com/file/d/0B19eK6xppbL0bGduWnZTeUdmd0U/view?usp=sharing</a>   |

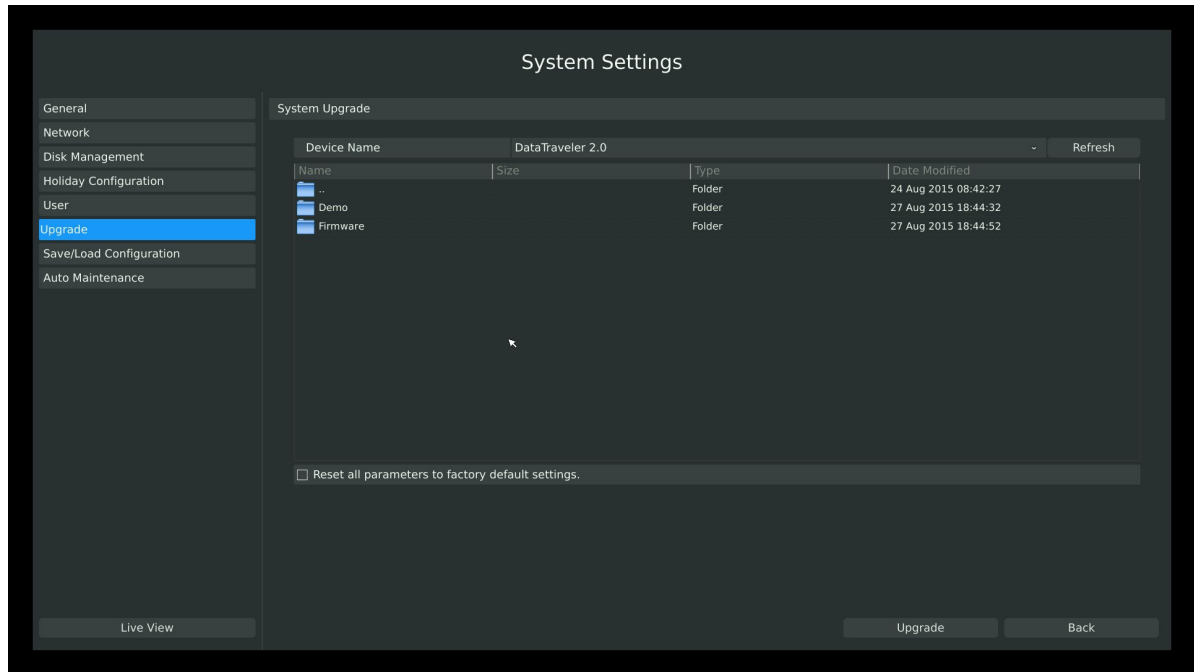
### Note:

- 1) If you fail to download the firmwares via clicking the links directly, please copy the links to browser to download them.
- 2) The second number stands for the major version number, while the last two number means the sub version number. Take 1.7.0.6 for an example, it means the NVR's main version is 7 and it's sub version is 6.
- 3) You can upgrade your NVR via local monitor or via web browser.

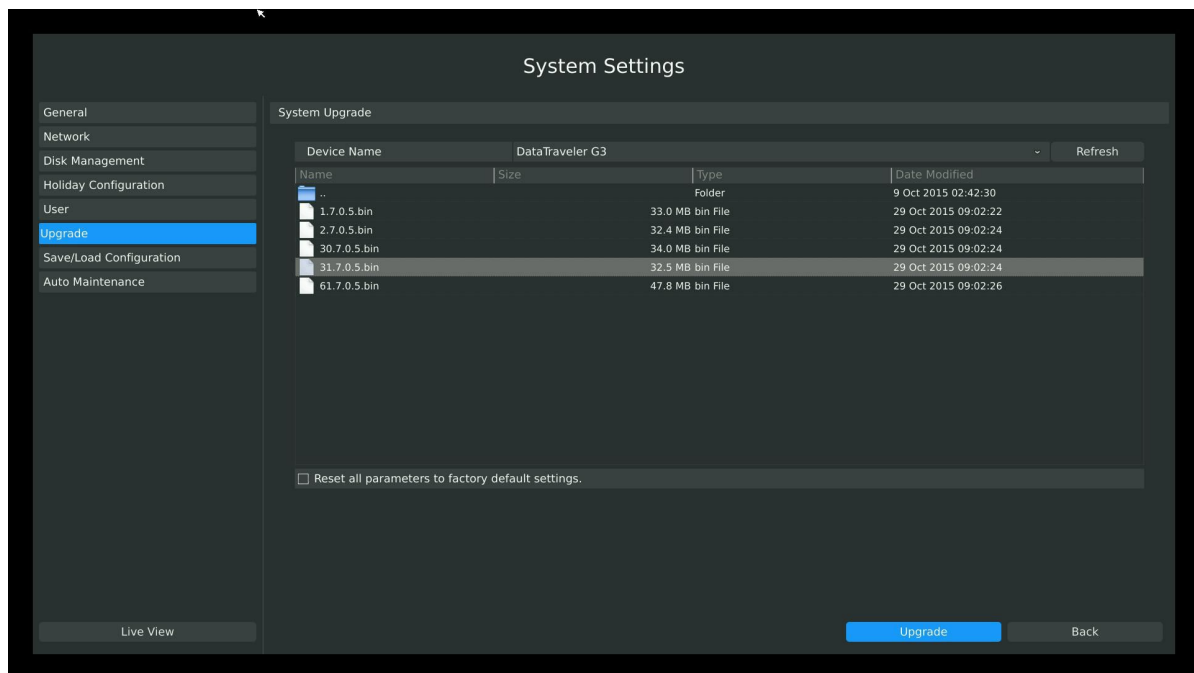
## 3.Upgrade Steps

### 3.1 Upgrade via Monitor:

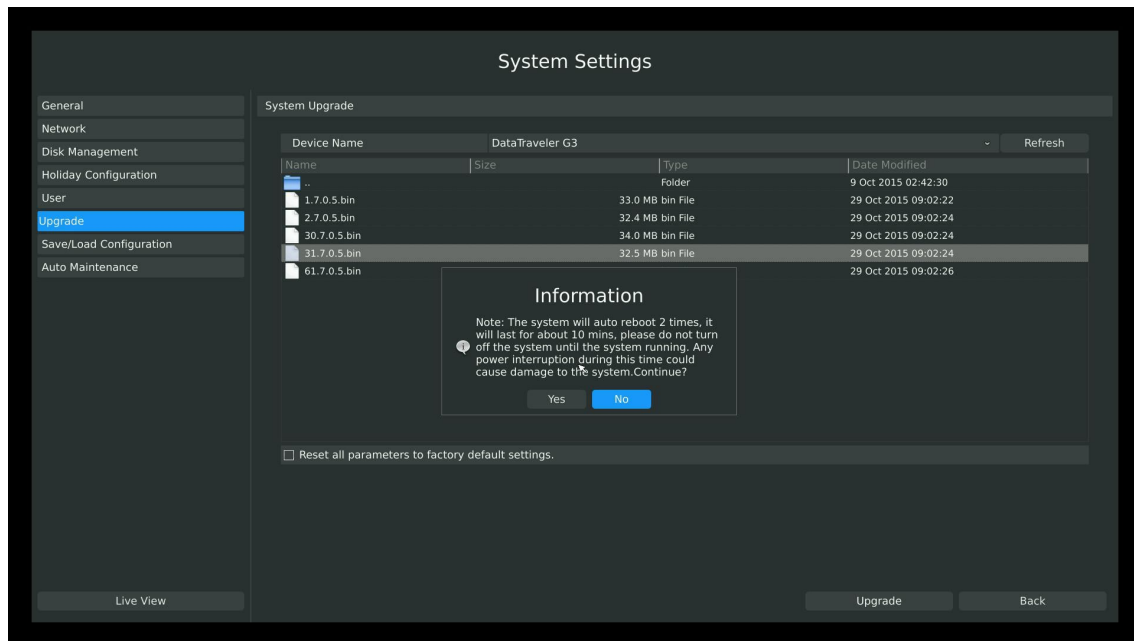
**Step1:** Enter upgrade menu by clicking Main Menu -> System Settings -> Upgrade



**Step2:** Search for device you downloaded in your USB, and select the .bin file



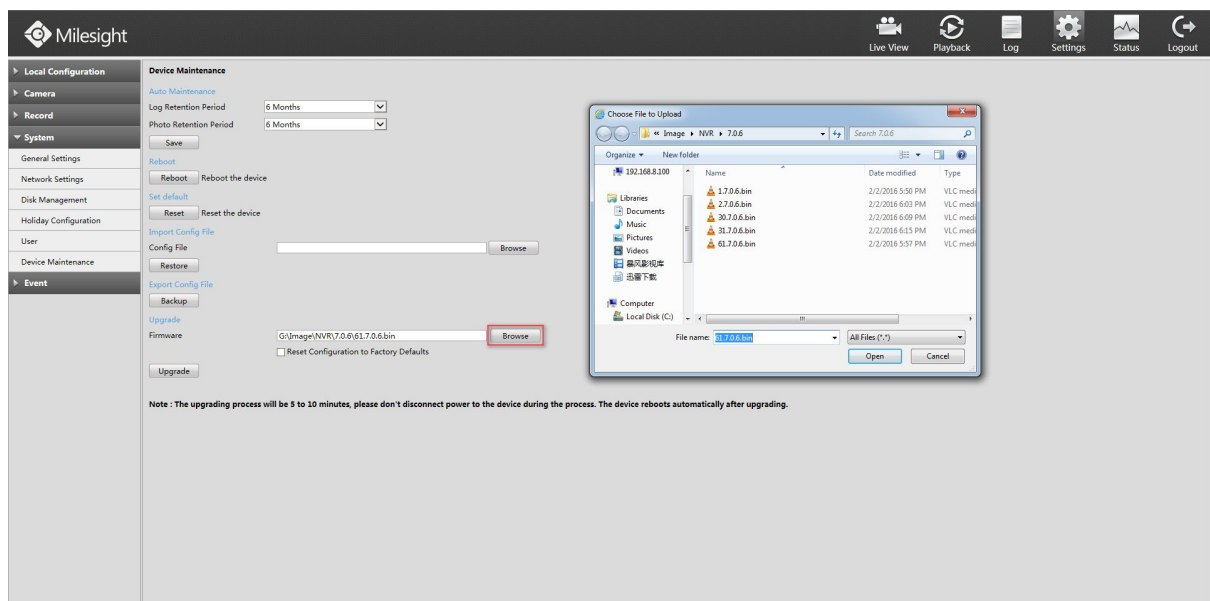
**Step3:** Click [Upgrade] button to confirm the upgrade. The system will reboot automatically after confirming upgrade.



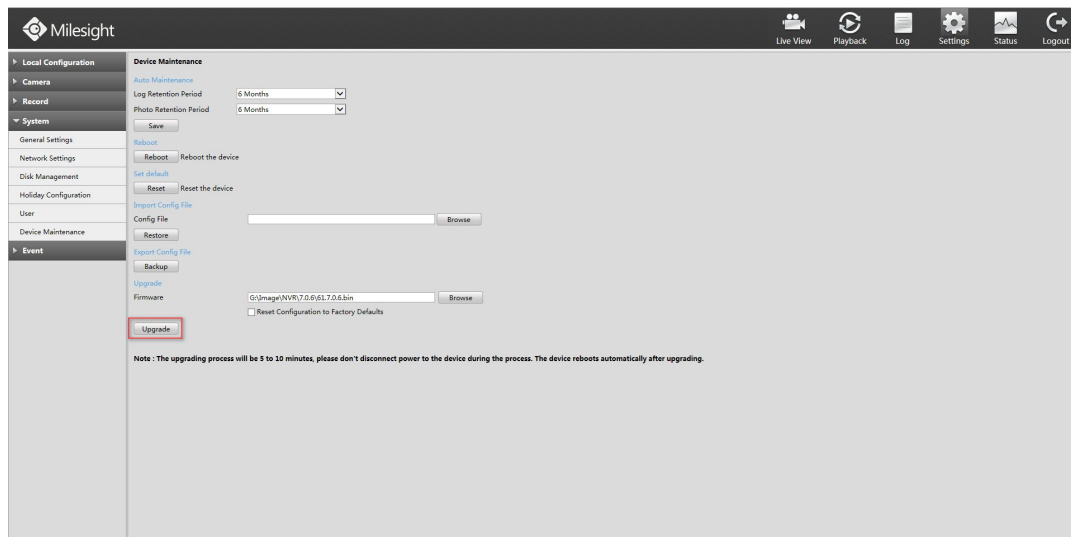
### 3.2 Upgrade via Web Page:

**Step1:** Settings -> System -> Device Maintenance

**Step2:** Click "Browse" and find the position where you downloaded. Remember to check the model, use the corresponding firmware for your model



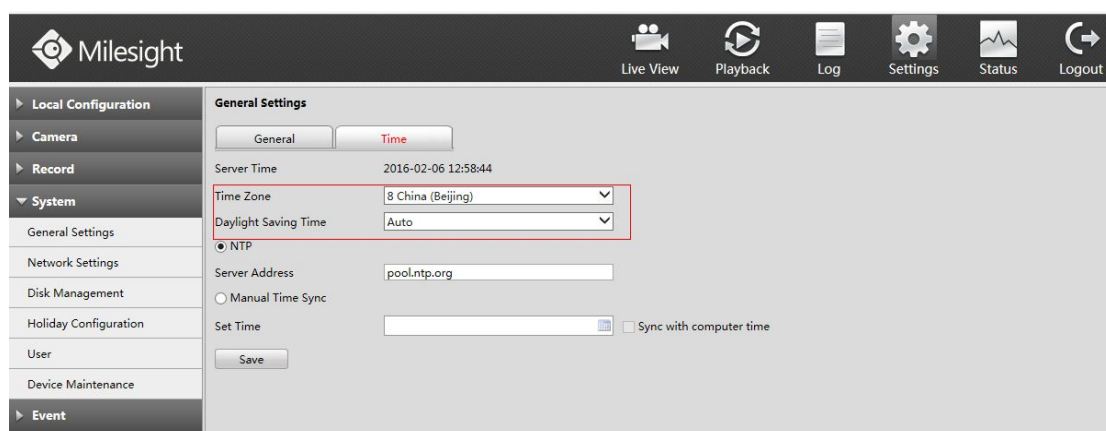
**Step3:** After choosing the corresponding firmware, click "Upgrade" button to confirm the upgrade



## 4.What's new

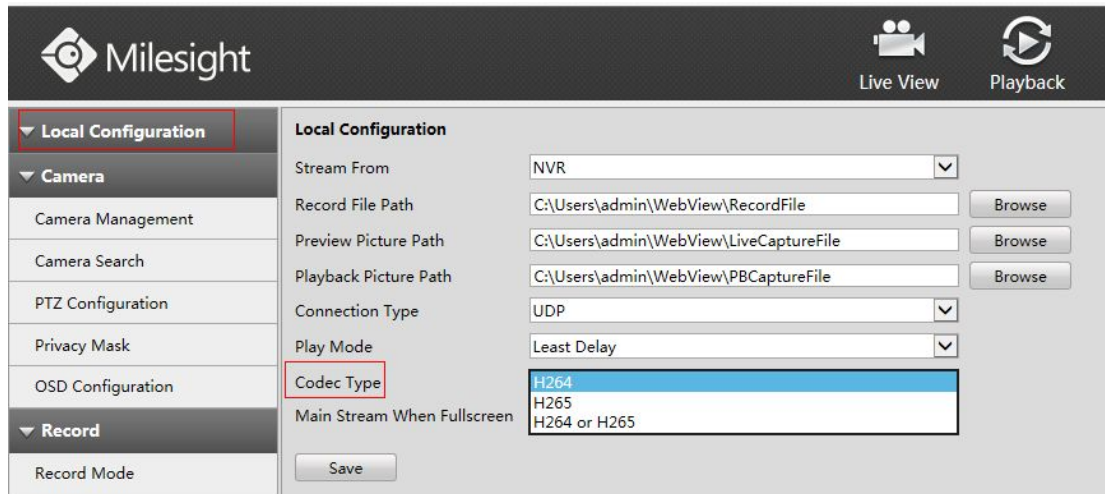
### 1. Changes

- (1) Change the default password to **"ms1234"** (From XX.7.0.6 or above). The former is "123456" , after resetting, the new default password will change into "ms1234". Without resetting, it will keep the old password "123456";
- (2) Support to enable/disable the cameras' Audio function directly;
- (3) Adopting CST standard for system time, NVR supports to sync the time of Milesight camera, whose software version is 4X.6.0.30 or above, or H.264 camera with "A" whose software version is 30.6.0.43 or above, to specific country time;

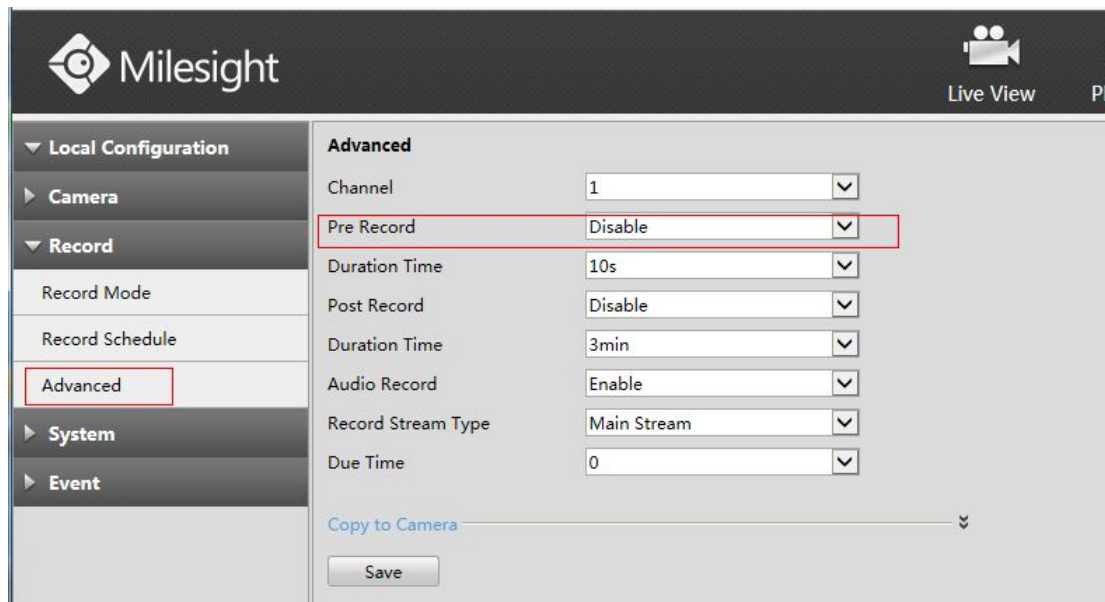


- (4) Add Codec Type(H.265, H.264, H.265/H.264) setting for all added cameras of

NVR whose model with "UT" ;

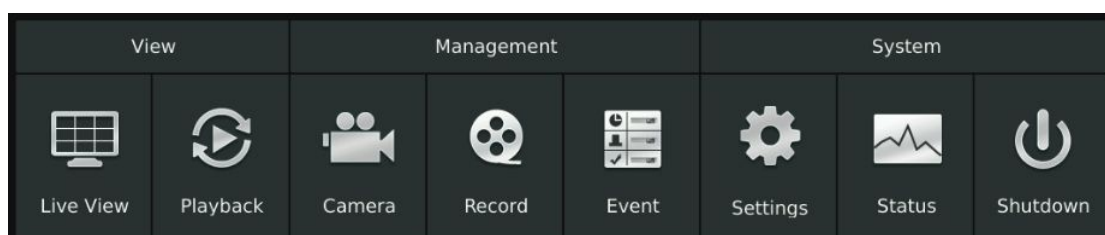


(5) Support Pre Record function of NVR model with "UT" ;



(6) Support H.265 via P2P;

(7) Big changes of the monitor menu;

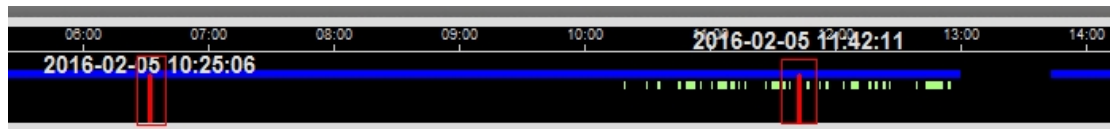


(8) System time is changed to 24-hour clock display;

(9) Add the Preset settings for Speed Dome on the Live View page;

(10) Add E-PTZ function on the Live View and Playback pages, support Zoom the interested areas by clicking or rolling mouse;

(11) Add the start and end mark when exporting the video files from disk;

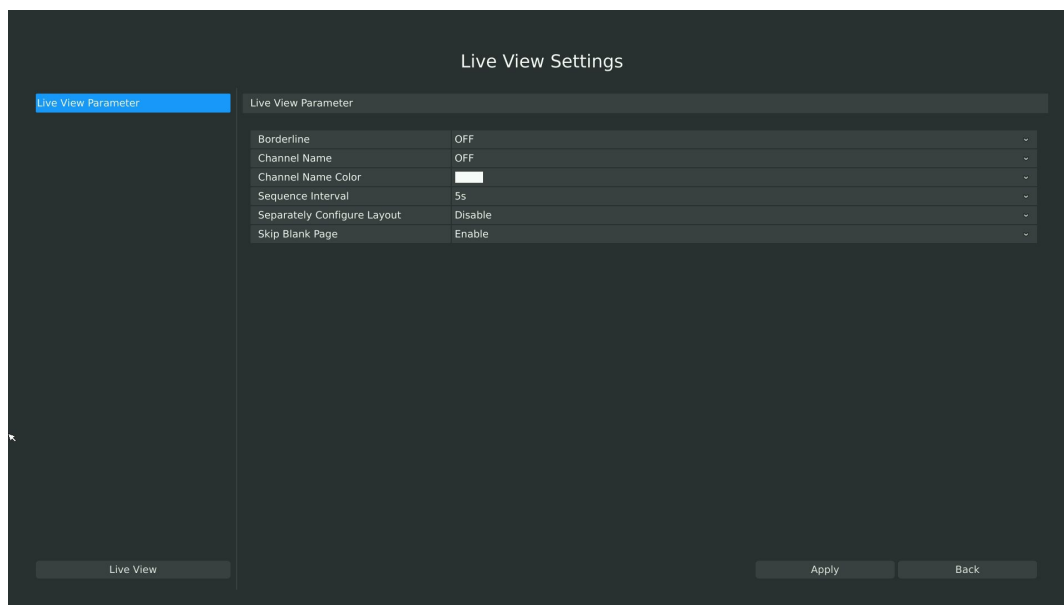


(12) Support to enter the path such as "rtsp:user:password@IP:port" with or without the user name and password when adding camera via RTSP;

(13) Support to change the parameters of the H.265 camera whose software version is 4X.6.0.30 or above;

(14) Plugin of the browser updated to version 1015;

(15) Layout Configuration page of the Live View module is removed for the NVR whose model is with "UT" ;



(16) The Audio button cannot be edited for cameras except Milesight cameras which is equipped with this function;

(17) Change the link strategy for RTSP and UDP by setting the overtime to 3s for

the two link ways;

## **2. Bug Fixes**

- (1) Fix the issue that Pro NVR(8000 series) cannot display the 4MP primary stream;
- (2) Fix the issue that changing the resolution of primary stream leads to not displaying the secondary stream;
- (3) Fix the issue that the record files whose recorded time was after 16:00 cannot be found in the +8 time zone;
- (4) Fix the issue that when the date was the first day of the month, it cannot find the record files of this month;
- (5) Fix the issue that some channels do not work under E-PTZ mode, but the higher resolution channel needs to be placed in front of the lower resolution channel;
- (6) Fix the issue that the bit rate(up to 16384kbs) of Milesight H.265 camera whose software version is 4X.6.0.30 or above, or H.264 camera with "A" whose software version is 30.6.0.43 or above can be compatible;
- (7) Fix the issue that when changing the bit rate or disabling secondary stream, the channel will reconnect and lead to the wrong status of camera ;
- (8) Fix the issue that it does not show "No Resource" after double-clicking the channel shown "No Resource" to zoom in and double-clicking to zoom out;
- (9) Fix the issue that 8000 series NVR shows blue screen and icons displacement;
- (10) Fix the issue that 8000 series NVR's "Load Balance" does not work;
- (11) Fix the issue that NVR fails to get the record files after changing the time zone;

## **3. Monitor**

- (1) Improve the strategy of searching cameras to avoid not completely searching



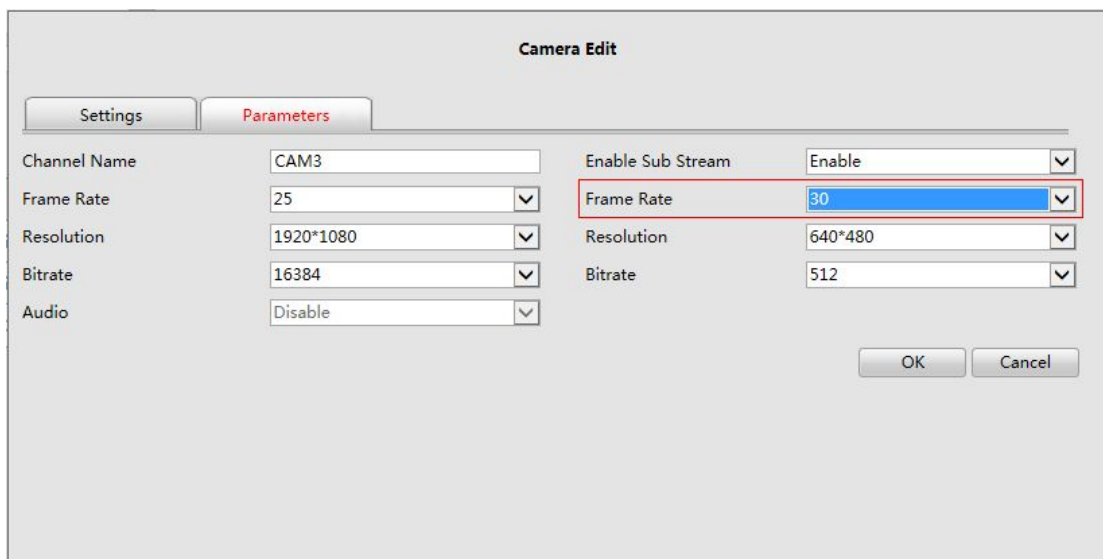
all cameras locally;

(2) Support to note user when adding H.264 camera to channel which was bound to encoding H.265;

(3) Support to note user when added camera's video codec was not matched to the channel codec type under the H.265/H.264 mode;

#### 4. Web

(1) Support up to 30fps for secondary stream;



The screenshot shows a 'Camera Edit' dialog box with two tabs: 'Settings' and 'Parameters'. The 'Parameters' tab is active. It contains two columns of settings. The left column has 'Channel Name' (CAM3), 'Frame Rate' (25), 'Resolution' (1920\*1080), 'Bitrate' (16384), and 'Audio' (Disable). The right column has 'Enable Sub Stream' (Enable), 'Frame Rate' (30), 'Resolution' (640\*480), and 'Bitrate' (512). The 'Frame Rate' dropdown in the right column is highlighted with a red box. At the bottom right are 'OK' and 'Cancel' buttons.

| Parameter         | Value     |
|-------------------|-----------|
| Channel Name      | CAM3      |
| Frame Rate        | 25        |
| Resolution        | 1920*1080 |
| Bitrate           | 16384     |
| Audio             | Disable   |
| Enable Sub Stream | Enable    |
| Frame Rate        | 30        |
| Resolution        | 640*480   |
| Bitrate           | 512       |

#### 5. SDK

(1) Increase 5 times for cache of TCP;

(2) Increase the interfaces of getting/setting Alarm in/out, Motion, Video Loss Schedule;

(3) Increase the interface of getting/setting Exception;

(4) Increase the interface of getting Record Schedule;

(5) Increase the channel authority for user authority;

(6) Increase the interface of operating with time string for Playback module;

(7) Increase new camera structure;

- (8) Increase information of getting/adding/editing/deleting cameras;
- (9) Increase the function of setting http\_port for RSVP.