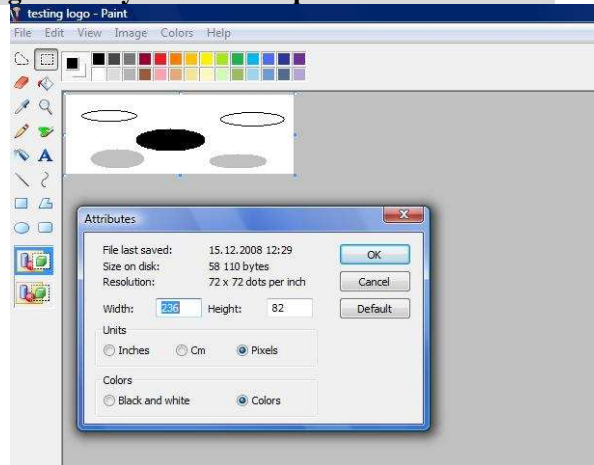


How to change the logo of WELL Phones

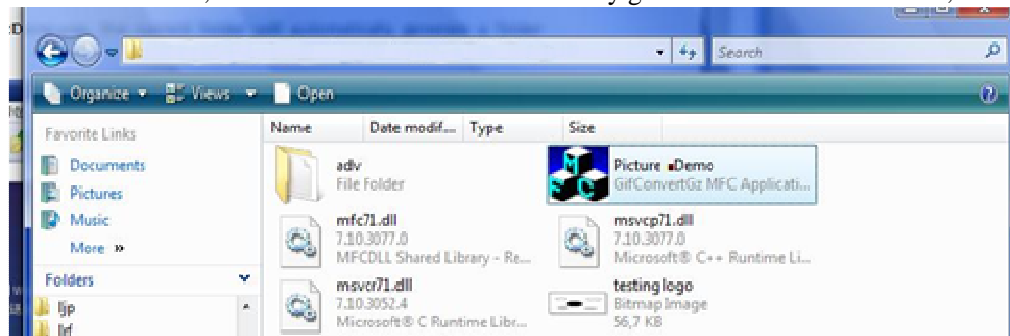
1. First of all, to prepare the Logo which you want to replace the current one:



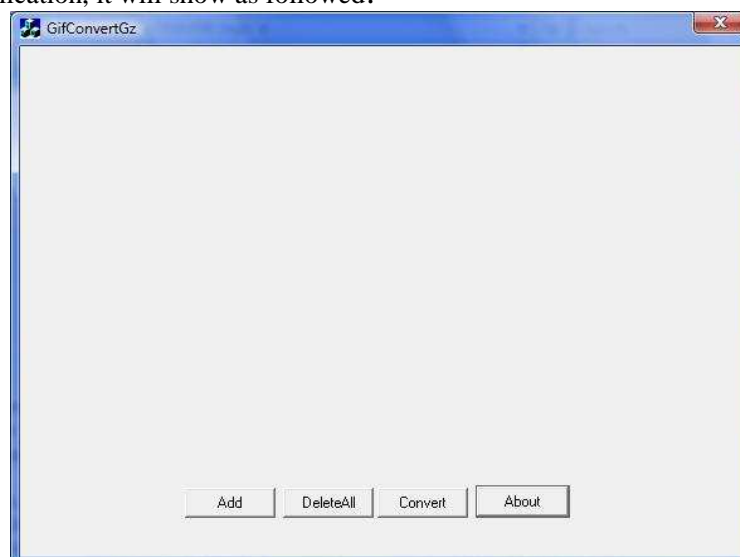
- A. The new LOGO's format must be .bmp
- B. For T28, the new LOGO's maximal resolution must less than or equal to **236*82**
For T80, T10T, T12, T26, T22, the new LOGO's maximal resolution must less than or equal to **132*64**
- C. The new LOGO must be black, white, or 2 gray scale(as the picture shows)
- D. The file name can't be too long and include the special characters, recommend to named the file as "adc.bmp"
- E. The ".bmp" file and "PictureExDemo.exe" application should not be placed in too deeper or the path which include special character, recommend to put them in root dictionary such as D:\

2. Convert to .dob:

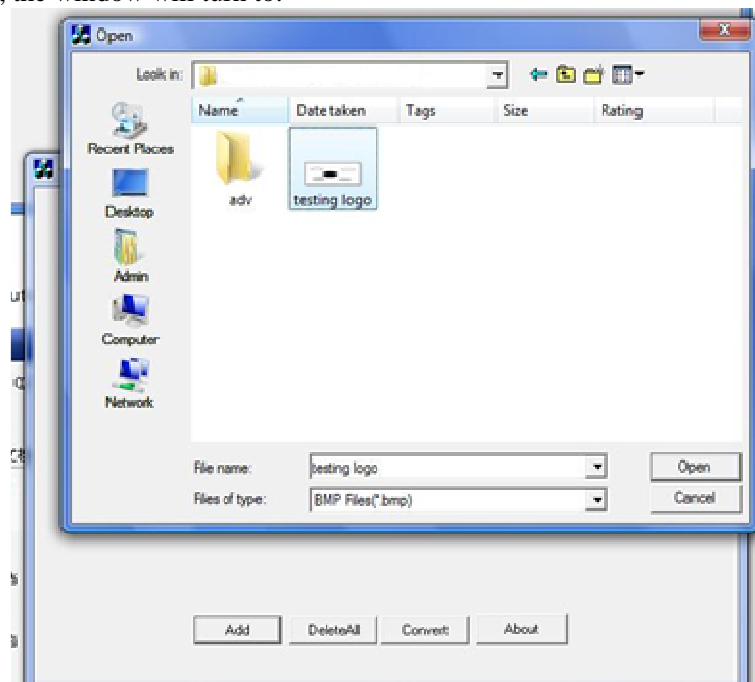
- A. Run the PictureExDemo.exe, the current folder will automatically generate a folder named adv;



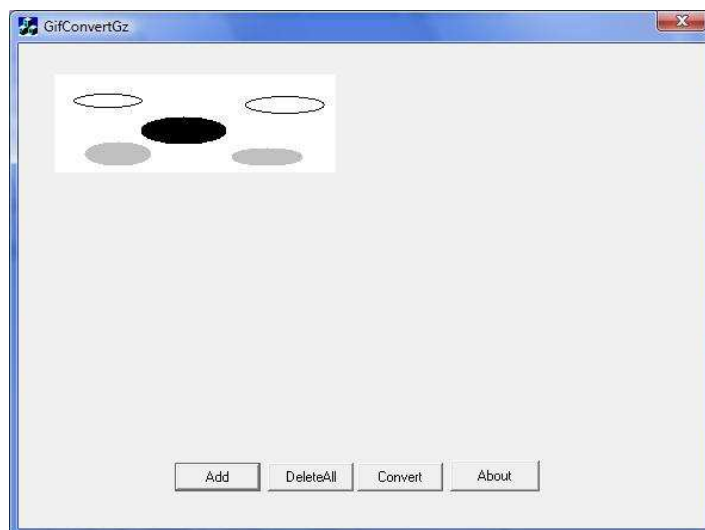
- B. After running the application, it will show as followed:



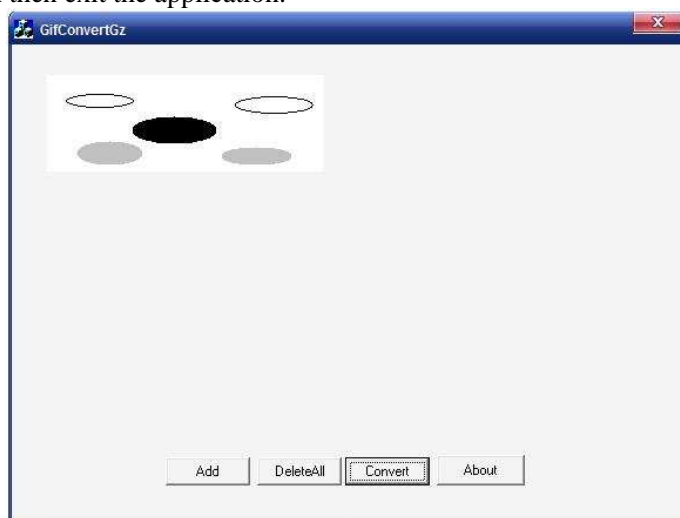
C. Click the button Add, the window will turn to:



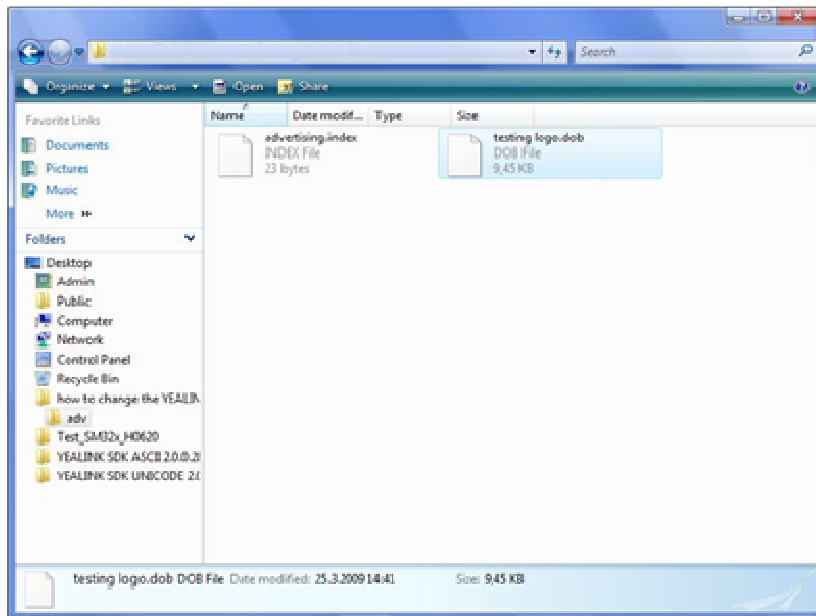
D. Choose the Logo which you have done in step 1(e.g.: testing logo.bmp), open it, the window will display the effect graphic:



E. Click the Convert button then exit the application.

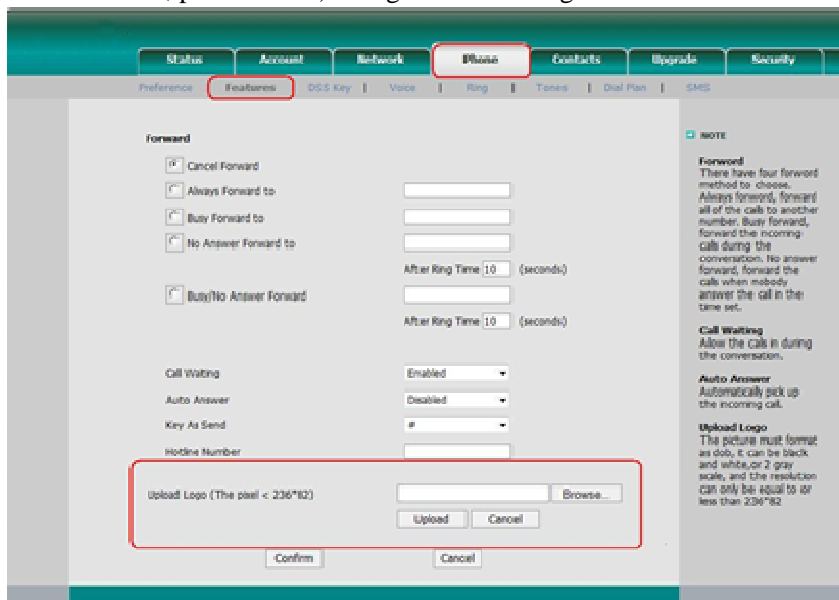


F. Then you can find the corresponding .dob file in adv(such as testing logo.dob), and there is another file .index which has not been applied in this function;



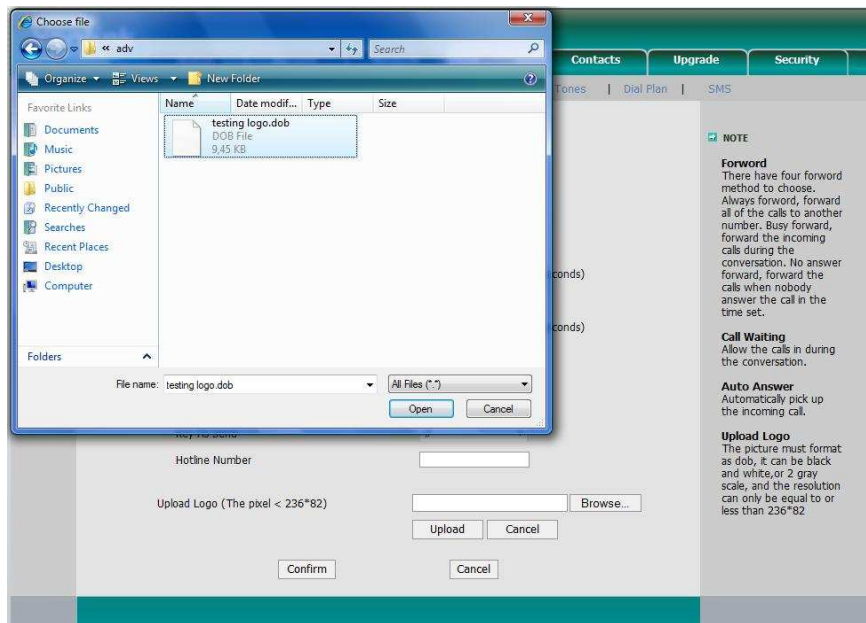
3. Upload to you phone:

Input the IP address in your web browser(you can see it by pressing OK when the phone is idle), (use the account name: admin, pwd: admin) to log into the management interface:



(This snapshot is use T28 for instance, for other model, it will show: **The pixel < 132*64**)

Choose: Phone Setting-> Function->Upload Logo->Browse... and the .dob file to upload:



4. Now you have change the Logo !